



CASE
CONSTRUCTION

TANDEM VIBRATORY COMPACTOR 450NX



MAIN REASONS TO CHOOSE 450NX

EXCELLENT SERVICEABILITY

- One-piece engine hood with secure locking
- 2,000-hour hydraulic oil change interval
- Easy access to engine and all service points

EFFICIENCY AND RELIABILITY

- Superior fuel efficiency vs. 45HP models
- Rust-proof plastic fuel tank with lockable cap



CONNECTED MACHINES

- Real-time monitoring with CASE Telematics
- Smarter fleet management for higher productivity
- Advanced safety with tracking and recovery
- Less downtime, better service
- Data-driven decisions for higher profitability

SAFETY ENHANCED

- Foldable 2-post ROPS for better visibility and access
- Electromagnetic immunity for reliable operation
- Rear-view mirrors on both sides
- Excellent drum-edge visibility
- Ergonomic footsteps for safer entry and exit

OPERATOR COMFORT

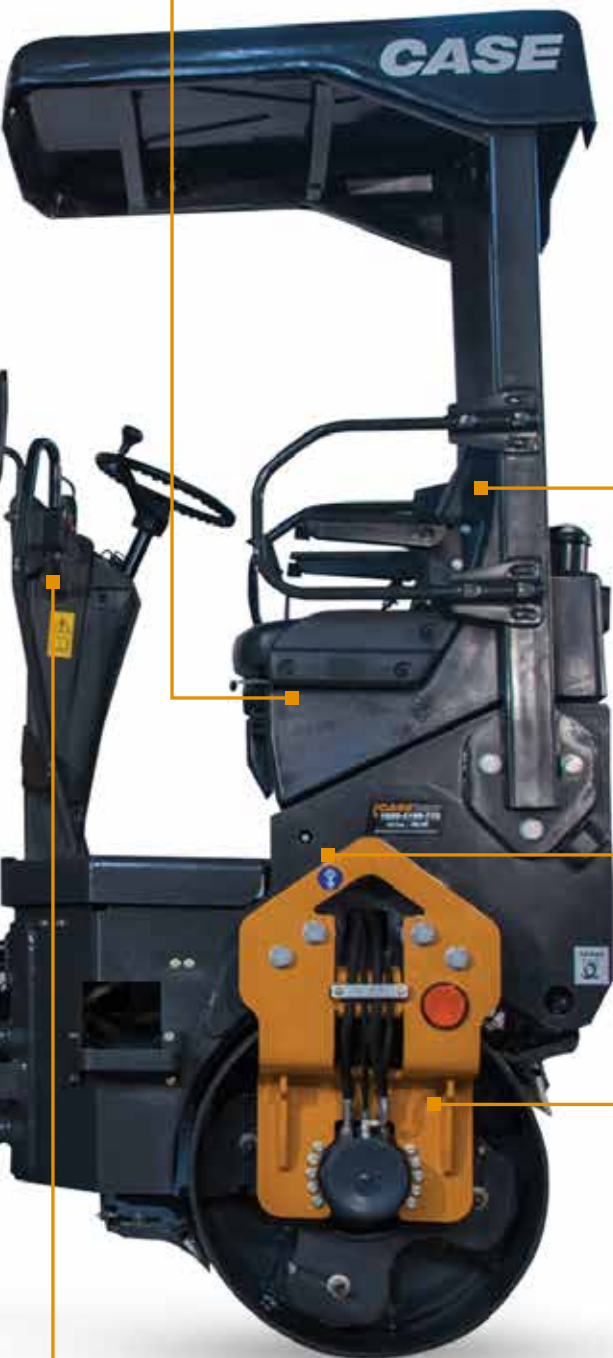
- New ergonomic operator station and controls
- Premium seat with high backrest and adjustable armrests
- Wide canopy for sun and rain protection

A LEGACY OF PERFORMANCE

- Reliable M&M 275DI mechanical engine
- Over 180 years of engineering excellence
- Compact design for easy maintenance
- High static linear load for superior mat finish

SMART DESIGN

- Compact, modern look with robust frame
- Intuitive cluster with integrated Vandal Guard
- Separate rust-free plastic water and fuel tanks
- Front-mounted fan for lower noise levels
- Fuel gauge and low water level sensor
- 1-meter drum width for tight-space maneuverability



MAIN FEATURES

450NX



OUTSTANDING SERVICEABILITY

Designed for maximum uptime, this machine offers quick and easy maintenance with a single-piece, openable engine hood featuring a secure locking mechanism. All key components, including the engine, are easily accessible—simplifying routine checks and reducing service time.

With a 2,000-hour hydraulic oil change interval, you benefit from fewer service interruptions and significantly lower operating costs.

EFFICIENCY AND RELIABILITY YOU CAN TRUST

Built for reliable performance, the machine features an optimized weight and is powered by Stage a V engine with a mechanical fuel pump—delivering consistent output in all conditions. Its superior fuel efficiency outperforms traditional 45HP, reducing operating expenses without compromising on power. A rust-proof plastic fuel tank with a lockable cap adds long-term durability and protection in tough jobsite environments.



ENHANCED SAFETY FOR CONFIDENT OPERATION

Every detail is engineered with safety in mind. A foldable two-post ROPS structure offers clear visibility and easy access to the operator station. Full compliance with Electromagnetic Immunity standards ensures safe, interference-free performance. Rear-view mirrors on both sides and a compact width improve drum-edge visibility, while new ergonomic footsteps enhance accessibility, minimizing risks during entry and exit.

COMFORT THAT KEEPS YOU PRODUCTIVE

The reimagined operator station delivers comfort, control, and ease of use. Intuitive controls and adjustable speed settings support smoother operation. A premium ergonomic seat with adjustable armrests and a high backrest offers lasting comfort, while a wide canopy shields operators from sun and rain—boosting focus and productivity throughout the day.



A LEGACY OF HIGH PERFORMANCE AND INNOVATION

Rooted in over 180 years of engineering heritage, this machine blends proven reliability with innovative technology. It's equipped with the robust M&M 275DI mechanical engine, providing steady power and performance. A compact design ensures easier maintenance and better maneuverability, while the high static linear load delivers an excellent mat finish—ideal for precision compaction and long-lasting results.

SMART DESIGN FOR SMARTER WORK

Modern design meets practical functionality. A compact and rugged frame ensures smooth operation in tight spaces, while the intuitive instrument cluster—with built-in Vandal Guard—keeps essential information safe and visible. Rust-proof plastic tanks for fuel and water extend service life, and a front-mounted engine fan reduces noise for a quieter jobsite. Features like a visible fuel gauge and low water level sensor help avoid unexpected downtime. The 1-meter drum width provides excellent agility for urban or confined applications.



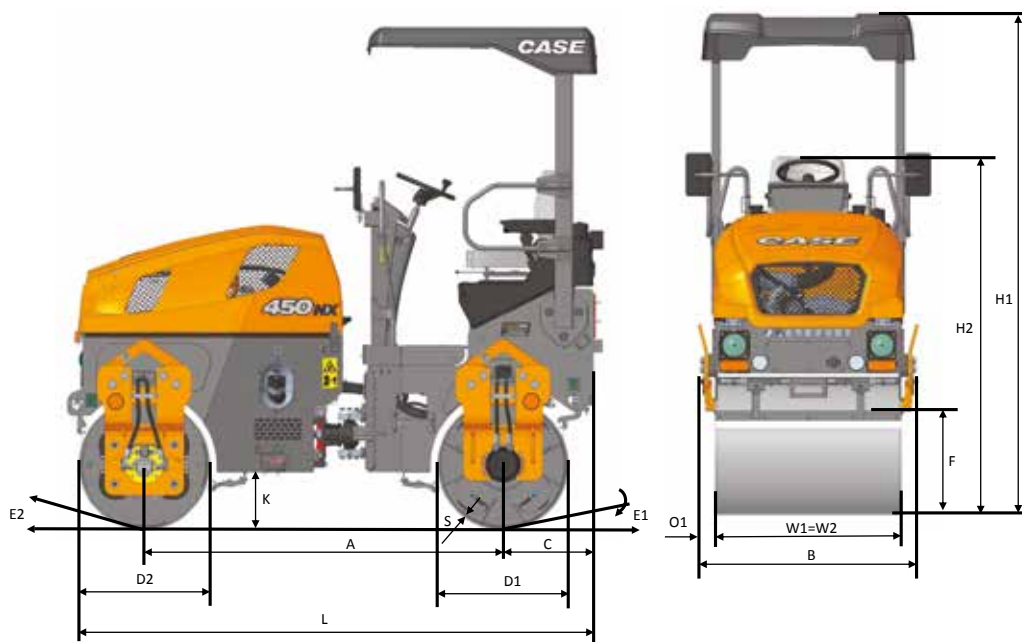
The New Gen of Telematics

SMART CONNECTIVITY THAT DRIVES PERFORMANCE

Take full command of your fleet with next-generation connectivity powered by my CASE Construction Telematics. Real-time data insights and intelligent fleet management tools streamline operations and enhance resource efficiency. Advanced tracking and recovery features improve machine safety and security. By reducing downtime and enabling data-driven decisions, you gain a clear edge in performance, service delivery, and profitability.

SPECIFICATIONS

ENGINE		
Engine Make		Mahindra & Mahindra
Engine Model		275DI
Max. Gross Power @2200 rpm (ISO 14396)	kW/hp	18.5 / 25
Cylinders		3
Displacement	L	2.048
Max. Torque @1200 rpm (ISO 14396)	Nm	130
Type of Cooling		Liquid Cooled
Emission Level/Certification		Stage-V/BS5
POWERTRAIN		
Max Travel Speed	km/hr	9.5
Max Working Speed	km/hr	9.5
Max Gradeability	%	35
STEERING		
Steering		Hydrostatic (Center Point Articulation)
Steering Angle	°	±27
Turning radius	m	3.32
Oscillation angle (degree)	°	±10
BRAKES		
Service Brakes		Hydrostatic
Parking Brakes		Spring applied, hydraulically released on rear drum
SERVICE CAPACITIES		
Water Tank Capacity	L	150
Fuel Tank Capacity	L	38
Hydraulic Tank Capacity	L	40
Engine Crank Case	L	5
Coolant	L	6.8
Water spray nozzles		5 nozzles per drum
Water tank material		Plastic
VIBRATION SYSTEM		
Vibration stages		Two
Frequency High	Hz	61
Frequency Low	Hz	46
Amplitude	mm	0.5
Centrifugal Force (High) - per drum	kgf/kN	2900/28.43
Centrifugal Force (Low) - per drum	kgf/kN	1652/16.20
Maximum Applied Force - per drum	kgf/kN	4380/42.95
OPERATING DATA		
Operating weight	kg	2900
Front Axle Load	kg	1480
Rear Axle Load	kg	1420
Static Linear Load - Front	kg/cm	14.8/14.2



DIMENSIONS

A - Wheelbase	m	1.925
B - Overall Width	m	1.184
C - Rear overhang - Drum Centre to frame edge	m	0.535
D1=D2 - Drum Diameter - Front/ Rear	m	0.700
H1 - Total Machine Height	m	2.697
H2 - Height to top of seat / Steering wheel	m	1.827
K - Ground Clearance	m	0.307
L - Total Length	m	2.871
O1 - Side Overhang - Drum edge to frame	mm	92
S - Drum Thickness	mm	12
W1=W2 - Drum Width - Front / Rear	m	1.000

STANDARD EQUIPMENT

12v Power Socket, 2 Frequency, both Drum or Single Drum Vibration, Sunroof, Horn, Front & Rear Working Lights, Hazard Lights & Parking Lights, Pressurized Water Sprinkler System, 2 Scraper Per Drum, Travel & Vibration Circuit Filter - Tank Mounted Type.

SAFETY FEATURES

New Secondary Braking System, Automatic Parking Braking In Case Of Engine Shutdown, No Vibration In Neutral, New Radiator Fan Guard.

INSTRUMENTATION

Fuel Level Indicators, Hydraulic Oil Level Indicator, Front & Rear Light Switch, New Digital Hour Meter, Drum & Frequency Selection Switch, Engine Coolant Temperature Gauge, Ignition Switch, Neutral Indicator, Battery Charging Indicator, Engine Oil Pressure Indicator, Parking Brake Indicator, Turn & Hazard Indicator, Filter Clogging Indicator.



SINCE 1842

BUILDING A STRONG CASE.

Since 1842, at CASE Construction Equipment we have lived by an unwavering commitment to build practical, intuitive solutions that deliver both efficiency and productivity.

We continually strive to make it easier for our customers to implement emerging technologies and new compliance mandates.

Today, our global scale combined with our local expertise enables us to keep customers' real-world challenges at the center of our product development.

The vast CASE dealers' network is always ready to support and protect your investment and exceed your expectations, while also providing you with the ultimate ownership experience.

Our goal is to build both stronger machines—and stronger communities. At the end of the day, we do what's right for our customers and our communities so that they can count on CASE.

CaseCE.com

NOTE: Standard and optional fittings can vary according to the demands and specific regulations of each country. The illustrations may include optional rather than standard fittings - consult your Case dealer. Furthermore, CNH Industrial reserves the right to modify machine specifications without incurring any obligation relating to such changes.

Conforms to directive 2006/42/EC

